

WHY SCULPTRA[®] AESTHETIC?

RESULTS THAT SPEAK
FOR THEMSELVES

BEFORE



AFTER 18 WKS.



AFTER 27 WKS.

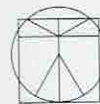


KATHERINE, 53

Actual patient. Individual results may vary.
Treated with 3 vials of *Sculptra Aesthetic*.

With age, your skin's natural collagen supply decreases and you'll start to notice wrinkles and other signs of facial aging.

Help replenish lost collagen¹⁻³ and activate the skin's natural regenerative process with *Sculptra Aesthetic*, an FDA-approved injectable that subtly restores facial volume.



WORKS WITH YOUR BODY

Addresses an underlying cause of facial aging, not just the symptoms.



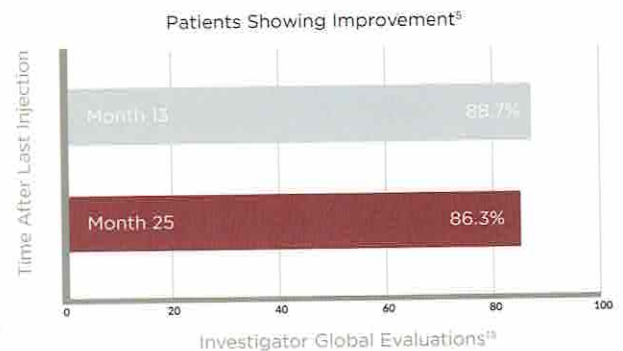
RESTORES SKIN GRADUALLY

Delivers significant, subtle results over the course of a series of treatments.*



PROVIDES LASTING RESULTS

Improvements can last up to 25 months, as proven in our long-term study.^{4†}



*Treatment regimen is typically three injections over the course of three or four months. Individual results and treatment sessions may vary.

†Clinical study ended at 25 months.

††Investigators used a 5-point scale (4=excellent improvement, 3=much improvement, 2=improved, 1=no change, 0=worse) for global evaluations.

5233 subjects were enrolled in the 13 month study; the long-term study looked at 106 *Sculptra Aesthetic* patients.

COLLAGEN IS KEY

A NATURAL IMPROVEMENT

BEFORE



AFTER 14 WKS.



EVELYN, 48

Actual patient. Individual results may vary.
Treated with 2 vials of *Sculptra Aesthetic*.

BEFORE



AFTER 27 WKS.



HYDI, 50

Actual patient. Individual results may vary.
Treated with 6 vials of *Sculptra Aesthetic*.

Why is collagen so important to the skin as we age?

Collagen is a fibrous protein in the deep dermis that gives skin structure and supports the functions of elastin and hyaluronic acid (HA). It helps maintain the skin's shape, while keeping it smooth and hydrated. A healthy supply of collagen makes for a more youthful-looking complexion.

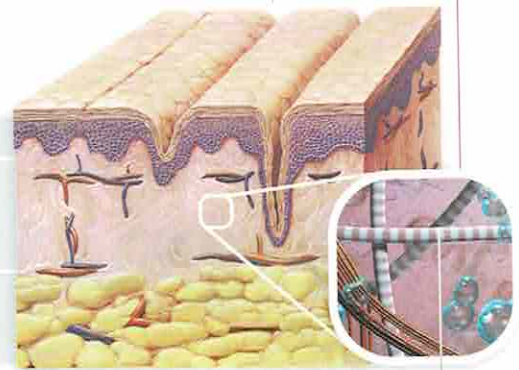
ASK YOUR SPECIALIST IF *SCULPTRA AESTHETIC* COULD HELP YOU REBUILD LOST COLLAGEN. LEARN MORE AT SCULPTRAAESTHETIC.COM.

YOU LOSE ABOUT 1% OF COLLAGEN PER YEAR.⁶

Epidermis¹⁰

Dermis¹⁰

Subcutaneous Layer¹⁰



Decreased Collagen

The most common side effects after initial treatment include injection site swelling, tenderness, redness, pain, bruising, bleeding, itching and lumps.

BY AGE 45 YOU FACE UP TO 25% COLLAGEN LOSS.⁶

YOUTHFUL-LOOKING SKIN STARTS WITHIN

If you want to appear more youthful-looking—without looking like you've had work done—then chances are *Sculptra® Aesthetic* may be a good choice for you.

Sculptra Aesthetic can stimulate natural collagen growth to help restore facial volume and fullness over time.

80% OF USERS WERE STILL SATISFIED WITH THEIR TREATMENT RESULTS 25 MONTHS AFTER THEIR LAST INJECTION.^{††*†}

80%



Actual patient. Individual results may vary.

Important Safety Information

Indication: *Sculptra® Aesthetic (injectable poly-L-lactic acid)* is indicated for use in people with healthy immune systems as a single regimen for the correction of shallow to deep nasolabial fold contour deficiencies and other facial wrinkles in which deep dermal grid pattern (cross-hatch) injection technique is appropriate.

Sculptra Aesthetic should not be used by people that are allergic to any ingredient of the product or have a history of keloid formation or hypertrophic scarring. Safety has not been established in patients who are pregnant, lactating, breastfeeding, or under 18 years of age.

Sculptra Aesthetic has unique injection requirements and should only be used by a trained physician. Contour deficiencies should not be overcorrected because they are expected to gradually improve after treatment.

Sculptra Aesthetic should not be injected into the blood vessels as it may cause vascular occlusion, infarction or embolic phenomena. Use at the site of skin sores, cysts, pimples, rashes, hives or infection should be postponed until healing is complete. *Sculptra Aesthetic* should not be injected into the red area (vermillion) of the lip or in the peri-orbital area.

The most common side effects after initial treatment include injection site swelling, tenderness, redness, pain, bruising, bleeding, itching and lumps. Other side effects may include small lumps under the skin that are sometimes noticeable when pressing on the treated area. Larger lumps, some with delayed onset with or without inflammation or skin discoloration, have also been reported.

Sculptra Aesthetic is available only through a licensed practitioner. Complete Instructions for Use are available at www.SculptraAesthetic.com.

*Clinical study ended at 25 months.

†User = Clinical trial subject

††One to four treatment sessions (typically three) may be needed to achieve optimal correction with a minimum of three week intervals between injection sessions.

References

- Stein P, Vitavska O, Kind P, Hoppe W, Wieczorek H, Schürer NY. The biological basis for poly-L-lactic acid-induced augmentation. *J Dermatol Sci*. 2015;78(1):26-33.
- Goldberg D, Guana A, Volk A, Daro-Kaftan E. Single-arm study for the characterization of human tissue response to injectable poly-L-lactic acid. *Dermatol Surg*. 2013;39(6):915-922.
- Sculptra Aesthetic* injectable poly-L-lactic acid. Instructions for Use. Galderma Laboratories. 2016.
- Narins RS, Baumann L, Brandt FS, et al. A randomized study of the efficacy and safety of injectable poly-L-lactic acid versus human-based collagen implant in the treatment of nasolabial fold wrinkles. *J Am Acad Dermatol*. 2010;62(3):448-462.
- Data on file. DL6049-0301LT (Dermik Laboratories) Clinical Study Report. Fort Worth, TX: Galderma Laboratories, L.P., 2007.
- Shuster S, Black MM, McVitie E. The influence of age and sex on skin thickness, skin collagen and density. *Br J Dermatol*. 1975;93:639-643.
- Ganjoo A. Aging skin. In: Venkataram M, ed. *ACS(1) Textbook on Cutaneous and Aesthetic Surgery*. 1st ed. New Delhi, India: Jaypee Brothers Medical Publishers; 2012:545-549.
- Vleggaar D, Fitzgerald R. Dermatological implications of skeletal aging: a focus on suprapariosteal volumization for perioral rejuvenation. *J Drugs Dermatol*. 2008;7(3):209-220.
- Donofrio L, Weinkle S. The third dimension in facial rejuvenation: a review. *J Cosm Derm*. 2006;5:277-283.
- Vedamurthy M. Soft tissue augmentation: hyaluronic acid fillers. In: Venkataram M, ed. *ACS(1) Textbook on Cutaneous and Aesthetic Surgery*. 1st ed. New Delhi, India: Jaypee Brothers Medical Publishers; 2012:634-645.
- Brown SA, Rohrich RJ, Baumann L, et al. Subject global evaluation and subject satisfaction using injectable poly-L-lactic acid versus human collagen for the correction of nasolabial fold wrinkles. *Plast Reconstr Surg*. 2011;127(4):1684-1692.

SculptraAesthetic.com

Sculptra[®]
aesthetic
injectable poly-L-lactic acid

ACTIVATE THE
POWER OF YOUR SKIN



Actual patient. Individual results may vary.

REWARDS BEYOND THE RESULTS

As an ASPIRE Galderma Rewards member, you'll earn points to redeem for valuable discounts across the product portfolio with every qualifying treatment. Sign up and receive an instant reward. Learn more and join at [AspireRewards.com](https://www.aspire-rewards.com).



Get connected to instant rewards at [AspireRewards.com](https://www.aspire-rewards.com)

Sculptra[®]
aesthetic
injectable poly-L-lactic acid

© 2020 Galderma Laboratories, L.P.
All trademarks are the property of their respective owners.
USMP/SCA/0672/1219



Sculptra[®]
aesthetic
injectable poly-L-lactic acid

ACTIVATE THE
POWER OF YOUR SKIN

THE POWER OF SCULPTRA AESTHETIC

Discover the treatment that activates your skin's natural power to help revitalize collagen production for a more youthful-looking appearance.



Actual patient. Individual results may vary.

Sculptra[®] Aesthetic is intended for use in people with healthy immune systems as a one-time treatment regimen of up to four injection sessions that are scheduled about three weeks apart for the correction of shallow to deep nasolabial fold contour deficiencies and other facial wrinkles.

Please see full Important Safety Information on page 7.